

Description

TYPE: CEM

CONSTRUCTION

Gearbox: Die Cast Zinc

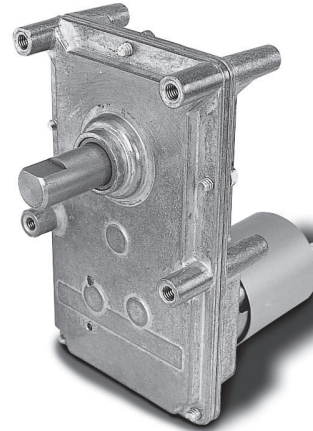
Lubrication: Grease

Gears: Powdered Metal & Cut Steel Spur

Bearings: Oil Impregnated Sintered Bronze

Rotation: Reversible

Duty: Continuous



STOCK ITEM	Molon Part No.	Voltage	F/L Torque (in.-lb.)	F/L Speed (RPM)		F/L Amps	Dimensions (in.)	
				12V	24V		"Y"	"Z"
X	CEM-1201-2M	12 / 24	150	0.4	1	0.20	2.77	1.09
X	CEM-1205-1M	12 / 24	120	5	10	1.40	3.74	1.48
X	CEM-1210-1M	12	120	11	-	2.45	3.47	1.41
X	CEM-1225-1M	12	55	23	-	2.35	3.47	1.41
X	CEM-1230-1M	12	43	29	-	2.35	3.47	1.41
	CEM-2430-1M	24	43	-	29	1.25	3.74	1.48

For additional information, including speed/torque curves, other mounting and performance options and competitor's cross reference, consult your local Sales Representative office or our website at: <http://www.molon.com>