

Description

TYPE: C20

CONSTRUCTION

Gearbox: Die Cast Zinc

Lubrication: Grease

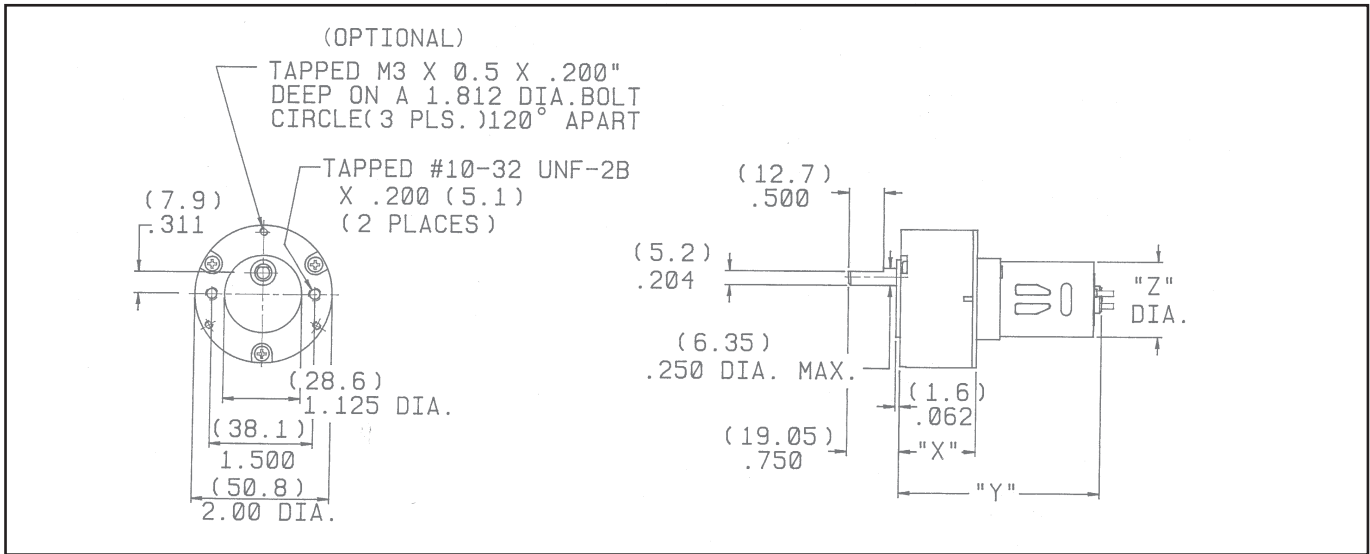
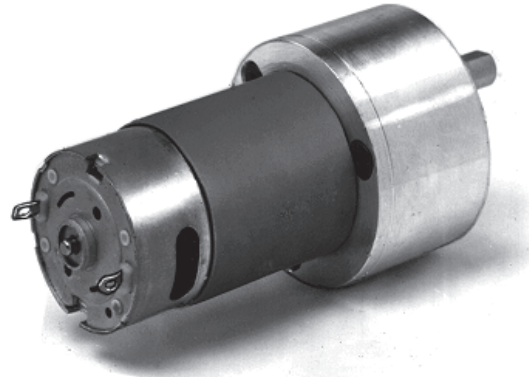
Gears: Powdered Iron Spur

Bearings: Oil Impregnated Sintered Bronze

Rotation: Reversible

Duty: Continuous

EMI/RFI Suppression: Varistor Disk on 24 volt motors.



STOCK ITEM	Molon Part No.	F/L Torque		F/L Speed	F/L Amps	Dimensions (in.)		
		(in.- lb.)	(in.-oz.)	(RPM)		"X"	"Y"	"Z"
12 VOLT								
X	C20-1202-1M	18	288	1.5	0.11	1.555	3.008	1.091
X	C20-1204-1M	18	288	3.5	0.16	1.401	3.059	1.091
X	C20-1207-1M	18	288	7	0.50	1.401	2.854	1.091
X	C20-1209-1M	18	288	9	0.38	1.401	2.854	1.091
X	C20-1217-1M	18	288	17	0.58	1.225	3.380	1.409
X	C20-1230-1M	18	288	30	1.00	1.225	3.380	1.409
	C20-1211-1M	7.8	125	11	0.22	1.225	2.883	1.091
	C20-1223-1M	7.8	125	23	0.68	1.225	2.678	1.091
	C20-1231-1M	7.8	125	31	0.52	1.225	2.678	1.091
X	C20-1256-1M	7.8	125	56	0.85	1.056	3.211	1.409
X	C20-12108-1M	7.8	125	108	1.40	1.056	3.211	1.409
	C20-1242-1M	2.2	36	42	0.22	1.056	2.714	1.091
	C20-1286-1M	2.2	36	86	0.68	1.056	2.509	1.091
	C20-12115-1M	2.2	36	115	0.52	1.056	2.509	1.091
	C20-12210-1M	2.2	36	210	0.85	0.895	3.050	1.409
	C20-12400-1M	2.2	36	400	1.40	0.895	3.050	1.409
24 VOLT								
X	C20-2408-1M	18	288	8	0.16	1.401	3.059	1.091
X	C20-2411-1M	18	288	11	0.24	1.401	2.854	1.091
X	C20-2438-1M	18	288	38	0.60	1.225	3.380	1.409
X	C20-2424-1M	13.4	214	24	0.33	1.225	2.883	1.091
X	C20-24115-1M	13.4	214	115	1.30	1.056	3.211	1.409
	C20-2436-1M	6.7	107	36	0.28	1.225	2.678	1.091
	C20-2490-1M	3.8	61	90	0.33	1.056	2.714	1.091
	C20-24430-1M	3.8	61	430	1.30	0.895	3.050	1.409
	C20-24135-1M	1.9	30.5	135	0.28	1.056	2.509	1.091

For additional information, including speed/torque curves, other mounting and performance options and competitor's cross reference, consult your local Sales Representatives office or our website at: <http://www.molon.com>